

Trails South Forty Approved Driveway Paint Colors

- **H & C Concrete Stain Code # HC 133 “Bombay” or Code # HC 157 “Sandstone”**
- **PPG Perma Crete Custom Code “Sandstone” (see attachment)**

H & C Stain can be purchased at Sherwin Williams on U.S. 1 north of Granada

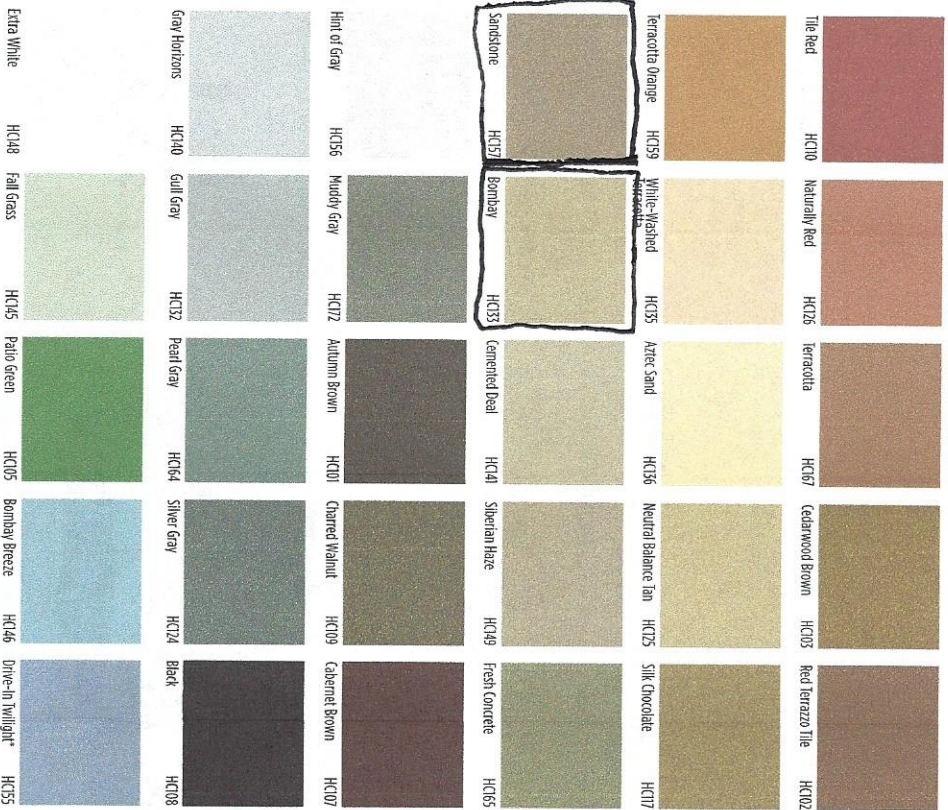
PPG Perma Crete can be purchased at the PPG Store on Hand Ave.

Please scroll through the following pages for more information!

If there are any questions email the office.

AVAILABLE COLORS

Tintable Palette for COLORTOP™ and ACRYLA-DECK® Systems are a representation. Actual color will vary due to the concrete finishing method (how smooth or porous the surface is), producing a mottling or distressed appearance.



* Color only available in Concrete Stain Solid Color Water-Based



Give your concrete decks and floors a long life with ACRYLA-DECK® WATER-BASED SOLID COLOR 100% ACRYLA-DECK COATING, a high-solids-stain floor stain designed for interior and exterior residential, architectural, commercial and light-industrial spaces.

FEATURES & BENEFITS:

- Highly resistant to pool chemicals and many other household chemicals for long-lasting beauty and protection
- Water-based formulation allows for easier application and cleanup
- Excellent color retention and alkali resistance
- Outstanding resistance to blistering
- Suitable for various custom color options

RECOMMENDED USES:

- Pool decks
- Patios
- Walkways
- Concrete floors
- Concrete decks

COVERPAGE & DRYING TIME:

Coverage:	sq. ft./gal	Drying time:
Concrete floors	200-300	1 hour
Porous concrete	150-250	Recoat: 4 hours
Concrete block	100-150	Light foot traffic: 2 hours
Split-face block	75-125	Heavy traffic: 7-96 hours
Brick (dry)	100-150	Full cure: 7-14 days
Asphalt	200-250	
Wood	250-350	

* Coverage will vary depending on the porosity and texture of the substrate

PRODUCT INFORMATION:

Description	SKU	UPC	SNH	Pack
1 Galon - Red-Brown - Cedar White	25300445	052773556	65292020	4
5 Galon - Red-Brown - Cedar White	25300520	052773564	65292020	1
1 Galon - Red-Brown - Deep	25300446	052773569	65292026	4
5 Galon - Red-Brown - Deep	25300521	052773565	65292026	1



A high-quality H-build latex deck coating that provides superior protection and beauty for both exterior and interior concrete. It may be applied to bare concrete or previously painted surfaces. H&B® ACRYLA-DECK® WATER-BASED SOLID COLOR H-BUILD DECK COATING WITH COOL FEEL™ TECHNOLOGY is designed to reduce the temperature of concrete surfaces exposed to UV rays by up to 20 degrees. F*

FEATURES & BENEFITS:

- Cool Feel™ Technology reduces the temperature of concrete surfaces exposed to UV rays by up to 20 degrees F*
- Highly resistant to pool chemicals and many other household chemicals for long-lasting beauty and protection
- H-build coating limits the surface from becoming slippery compared to conventional pool coatings
- Water-based formulation allows for easier application and clean-up
- Extra White and Deep Beers available for various custom color options

RECOMMENDED USES:

- Pool decks
- Patios
- Walkways
- Concrete floors
- Concrete decks

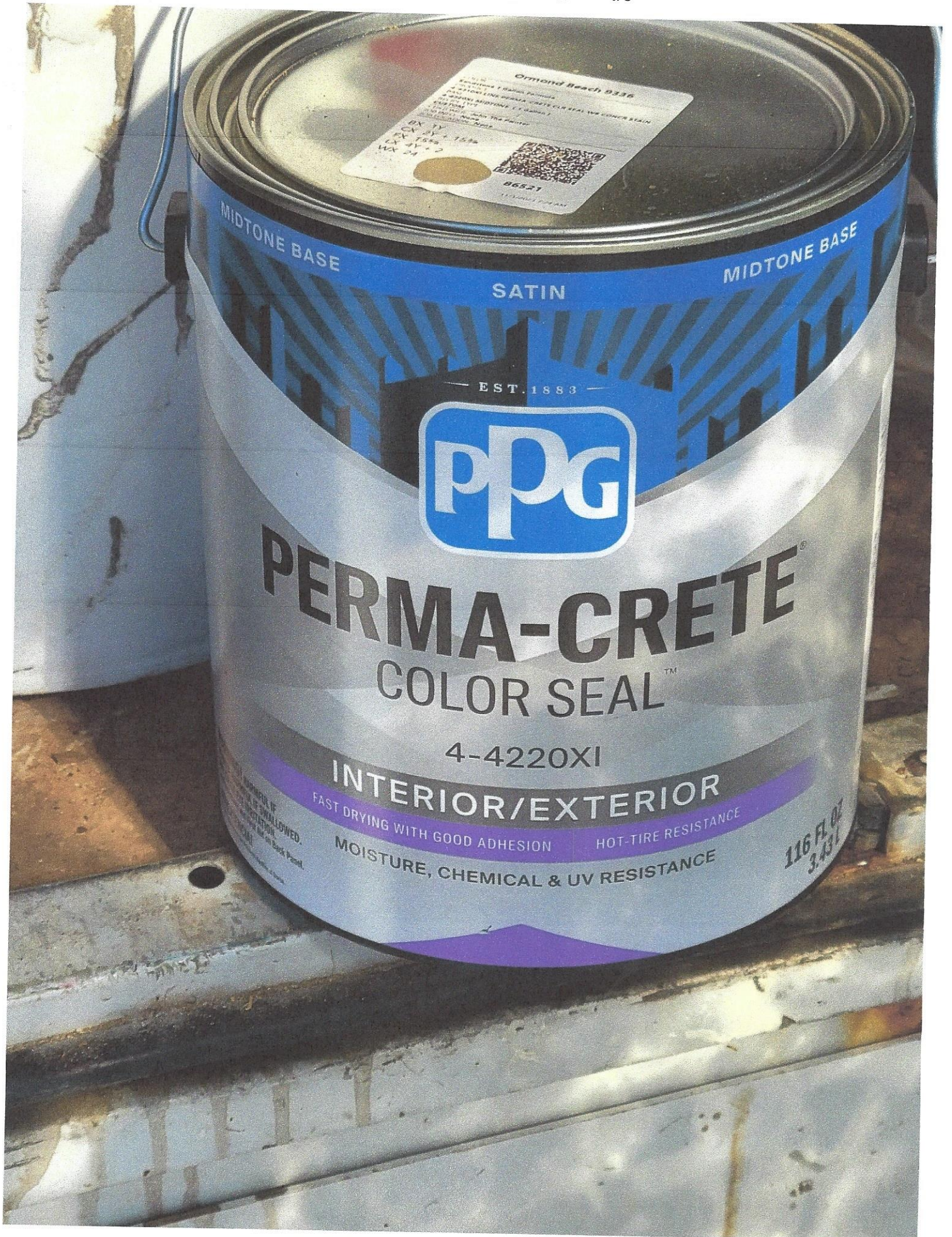
COVERPAGE & DRYING TIME:

Coverage:	sq. ft./gal	Drying time:
Concrete floors	200-300	1 hour
Porous concrete	150-250	Recoat: 2 hours
Concrete block	100-150	Light foot traffic: 2 hours
Split-face block	75-125	Heavy traffic: 7-96 hours
Brick (dry)	100-150	Full cure: 7-14 days
Asphalt	200-250	
Wood	250-350	

* Coverage will vary depending on the porosity and texture of the substrate

PRODUCT INFORMATION:

Description	SKU	UPC	SNH	Pack
1 Galon - Red-Brown - Cedar White	25300436	052773560	65292048	4
5 Galon - Red-Brown - Cedar White	25300520	052773565	65292048	1
1 Galon - Red-Brown - Deep	25300446	052773567	65292030	4
5 Galon - Red-Brown - Deep	25300521	052773569	65292048	1



Ormond Beach 9336

COLOR:

Sandstone 1 Gallon Formula

PRODUCT

4-4210XI LINE PERMA-CRETE CLR SEAL WB CONCR STAIN
BASE

4-4220XI MIDTONE (1 Gallon)

RECIPE TYPE

CUSTOM

CUSTOMER: John The Painter

JOB INFO: None

JOB LOCATION: None

BX 1Y

CX 2Y + 15³/₈

FX 15⁵/₈

LX 4Y + 2

WX 24



86521

11/3/2023 7:24 AM